



REGIONAL SPECIALISED METEOROLOGICAL CENTRE-TROPICAL CYCLONES, NEW DELHI
TROPICAL WEATHER OUTLOOK

DEMS-RSMC TROPICAL CYCLONES NEW DELHI DATED 01.08.2021

TROPICAL WEATHER OUTLOOK FOR NORTH INDIAN OCEAN (THE BAY OF BENGAL AND ARABIAN SEA) VALID FOR NEXT 120 HOURS ISSUED AT 0600 UTC OF 01.08.2021 BASED ON 0300 UTC OF 01.08.2021.

BAY OF BENGAL:

YESTERDAY'S, WELL MARKED LOW PRESSURE AREA OVER SOUTHWEST BIHAR & NEIGHBOURHOOD NOW LAY OVER SOUTHEAST UTTAR PRADESH & NEIGHBOURHOOD AT 0300UTC OF TODAY, THE 1ST AUGUST 2021. IT IS LIKELY TO MOVE WESTNORTHWESTWARDS ACROSS SOUTHERN PARTS OF UTTAR PRADESH DURING NEXT 2 DAYS.

YESTERDAY'S, LOW PRESSURE AREA OVER SOUTHERN PARTS OF HARYANA & NEIGHBOURHOOD PERSISTS OVER SAME REGION AT 0300UTC OF TODAY, THE 1ST AUGUST 2021.

CONVECTION ASSOCIATED WITH THE ABOVE WELL MARKED LOW PRESSURE AREA OVER SOUTHEAST UTTAR PRADESH & NEIGHBOURHOOD OVERLAND. ASSOCIATED BROKEN LOW AND MEDIUM CLOUDS WITH EMBEDDED INTENSE TO VERY INTENSE CONVECTION LAY OVER SOUTHEAST UTTAR PRADESH ADJOINING NORTHEAST MADHYA PRADESH & NEIGHBOURHOOD. MINIMUM CLOUD TOP TEMPERATURE (CTT) IS MINUS 84 °C.

SCATTERED LOW AND MEDIUM CLOUDS WITH EMBEDDED INTENSE TO VERY INTENSE CONVECTION LAY OVER NORTH BAY OF BENGAL ADJOINING EASTCENTRAL BAY OF BENGAL, ARAKAN COAST, SOUTHWEST BAY OF BENGAL AND NORTH ANDAMAN SEA. SCATTERED LOW AND MEDIUM CLOUDS WITH EMBEDDED MODERATE TO INTENSE CONVECTION LAY OVER SOUTHEAST BAY OF BENGAL & SOUTH ANDAMAN SEA AND WEAK TO MODERATE CONVECTION OVER WESTCENTRAL BAY OF BENGAL.

PROBABILITY OF CYCLOGENESIS (FORMATION OF DEPRESSION) DURING NEXT 120 HRS):

24 HOURS	24-48 HOURS	48-72 HOURS	72-96 HOURS	96-120 HOURS
NIL	NIL	NIL	NIL	NIL

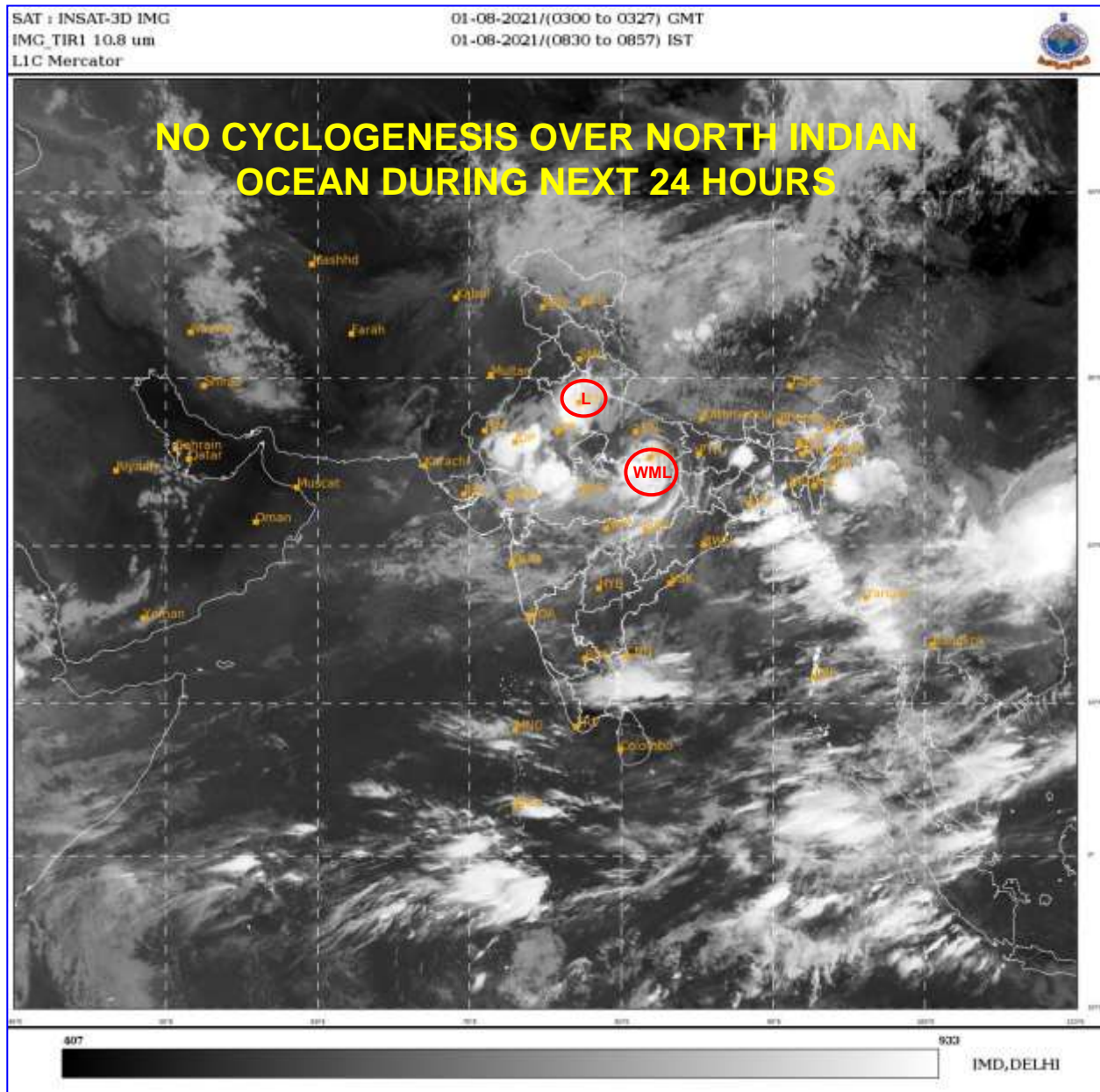
ARABIAN SEA:

SCATTERED LOW AND MEDIUM CLOUDS WITH EMBEDDED MODERATE TO INTENSE CONVECTION LAY OVER SOUTHEAST ARABIAN SEA AND WEAK TO MODERATE CONVECTION LAY OVER GULF OF KUTCH, GULF OF CAMBAY, NORTHEAST & EASTCENTRAL ARABIAN SEA.

PROBABILITY OF CYCLOGENESIS (FORMATION OF DEPRESSION) DURING NEXT 120 HRS):

24 HOURS	24-48 HOURS	48-72 HOURS	72-96 HOURS	96-120 HOURS
NIL	NIL	NIL	NIL	NIL

REMARKS: NIL



- WML STANDS FOR WELL MARKED LOW PRESSURE AREA
- L STANDS FOR LOW PRESSURE AREA